

Containertypes



20' General Purpose Container

Inside Dimensions (LxWxH)	5,89 x 2,35 x 2,39 m
Door Opening (WxH)	2,34 x 2,29 m
Tare	2250 kg
Max. Payload	28230 kg
Capacity	33,2 cbm



40' General Purpose Container

Inside Dimensions (LxWxH)	12,02 x 2,35 x 2,39 m
Door Opening (WxH)	2,34 x 2,29 m
Tare	3780 kg
Max. Payload	26700 kg
Capacity	67,7 cbm



40' High Cube Container

Inside Dimensions (LxWxH)	12,02 x 2,35 x 2,69 m
Door Opening (WxH)	2,34 x 2,59 m
Tare	4020 kg
Max. Payload	26460 kg
Capacity	76,3 cbm



20' Open Top Container

Inside Dimensions (LxWxH)	5,89 x 2,35 x 2,37 m
Door Opening (WxH)	2,33 x 2,28 m
Tare	2250 kg
Max. Payload	28230 kg
Capacity	32,0 cbm



40' Open Top Container

Inside Dimensions (LxWxH)	12,02 x 2,35 x 2,37 m
Door Opening (WxH)	2,33 x 2,28 m
Tare	3850 kg
Max. Payload	26740 kg
Capacity	65,5 cbm



20' Hard Top Container

Inside Dimensions (LxWxH)	5,89 x 2,34 x 2,38 m
Door Opening (WxH)	2,33 x 2,28 m
Tare	2700 kg
Max. Payload	27780 kg
Capacity	32,8 cbm



40' Hard Top Container

Inside Dimensions (LxWxH)	12,02 x 2,35 x 2,38 m
Door Opening (WxH)	2,34 x 2,29 m
Tare	4700 kg
Max. Payload	25780 kg
Capacity	67,2 cbm



40' High Cube Hard Top Container

Inside Dimensions (LxWxH)	12,02 x 2,35 x 2,69 m
Door Opening (WxH)	2,33 x 2,52 m
Tare	4900 kg
Max. Payload	25580 kg
Capacity	75,8 cbm



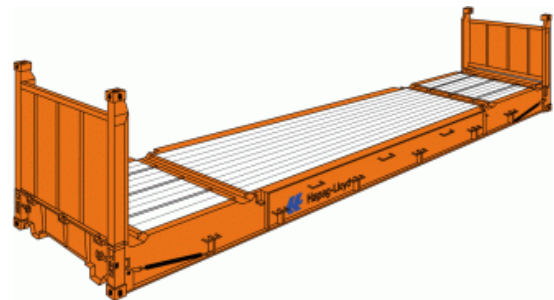
20' Flat

Inside Dimensions (LxWxH)	5,98 x 2,23 x 2,25 m
Door Opening (WxH)	-
Tare	2500 kg
Max. Payload	27800 kg
Capacity	-



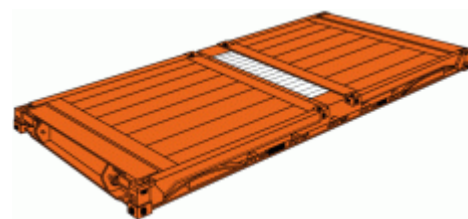
40' Flat

Inside Dimensions (LxWxH)	12,01 x 2,23 x 1,98 m
Door Opening (WxH)	-
Tare	4200 kg
Max. Payload	40800 kg
Capacity	-



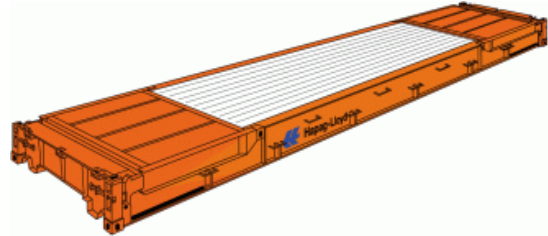
20' Platform

Inside Dimensions (LxWxH)	6,05 x 2,43 m
Door Opening (WxH)	-
Tare	2520 kg
Max. Payload	27960 kg
Capacity	-



40' Platform

Inside Dimensions (LxWxH)	12,19 x 2,24 m
Door Opening (WxH)	-
Tare	5700 kg
Max. Payload	39300 kg
Capacity	-



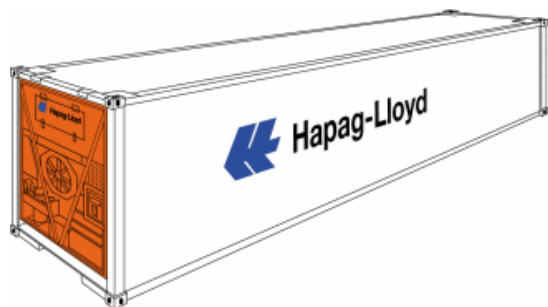
20' Refrigerated Container

Inside Dimensions (LxWxH)	5,48 x 2,29 x 2,25 m
Door Opening (WxH)	2,29 x 2,22 m
Tare	3160 kg
Max. Payload	27320 kg
Capacity	28,3 cbm



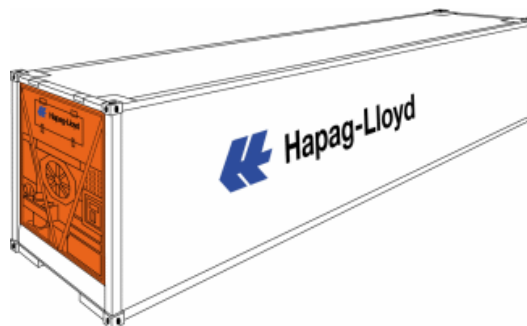
40' Refrigerated Container

Inside Dimensions (LxWxH)	11,56 x 2,29 x 2,26 m
Door Opening (WxH)	2,29 x 2,19 m
Tare	4600 kg
Max. Payload	29400 kg
Capacity	60,0 cbm



40' High Cube Refrigerated Container

Inside Dimensions (LxWxH)	11,64 x 2,29 x 2,50 m
Door Opening (WxH)	2,29 x 2,52 m
Tare	4180 kg
Max. Payload	30480 kg
Capacity	66,5 cbm



Quelle: Hapag Lloyd AG